



MODULE MOUNTING STRUCTURES

- Ground Mounting Structure
- Rooftop Mounting Structure
- Industrial Tin Shade Structure
- Carport Structure
- Customized Solutions



JAKSON MODULE MOUNTING STRUCTURE

Jakson offers a wide range of module mounting structures for PV solar power projects to suit ground or rooftop solar installations. Our systems combine optimum dimensioning, short mounting times, economic efficiency and maximum durability to help achieve high efficiencies from PV systems.

Jakson's mounting systems are modular-unit assembly systems comprising of universally applicable quality components facilitating installation of modules at almost any site. The products are available from Jakson as standard individual units or can be compiled to meet customised requirements.

WHAT WE DO

- Design
- Manufacture
- Quality assurance
- Quality control
- Shop assembly
- Shop testing
- Delivery at site complete with all auxiliaries, accessories & spare parts
- Site storage and preservation
- Installation, commissioning, performance and acceptance
- Training of client personnel

QUALITY STANDARDS

Jakson module mounting structures (made of sheet steel / aluminum) confirm to following standards

- IS:800
- IS:801
- IS:806
- IS:808
- IS:812
- IS:813
- IS:1161
- IS:4923
- IS:6623
- IS:1977

GALVANIZATION STANDARDS

The structures are galvanized giving smooth and uniform thickness. The process is carried out under supervision of qualified engineers to ensure conformance to the following applicable standards

- IS:2633
- IS:4759
- IS:2629
- IS:6745



GROUND MOUNTED MODULE MOUNTING STRUCTURE

Ground mounted structures consist of PV Modules (framed/unframed) held in place by racks or frames that are attached to the ground based mounting structure depending upon the number of modules per unit.

Every structure developed is a good blend of optimization and customization i.e. these structures can be customized to fit any type of PV module ranging from 40 Wp to 400 Wp and can be optimized for varied soil types ranging from sandy deserts to hard rocky terrain. The arrangement of modules can either be landscape or portrait orientated.

GROUND MOUNTED STRUCTURE VARIANTS

- Fixed
- Seasonal manual tilt
- Seasonal tilt solar tracker system

GROUND MOUNTED STRUCTURE SUPPORTS

- Pole mounts - driven directly into the ground or embedded in concrete
- Foundation mounts - Fixed to concrete slabs or poured footings
- Ballasted footing mounts - concrete or steel bases that use weight to secure the panels in position and do not require ground penetration
- Well suited for sites where excavation is not possible such as capped landfills
- Easy decommissioning or relocation of solar panel systems

RAMMING TYPE GROUND MOUNTED STRUCTURE

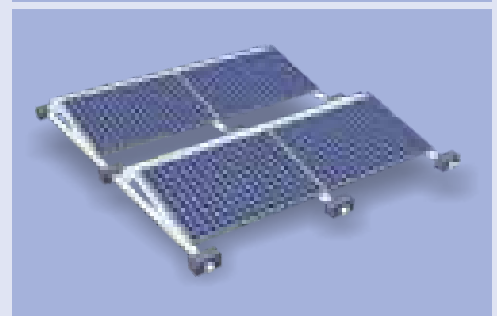
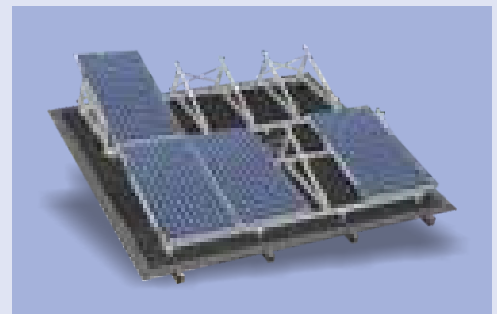
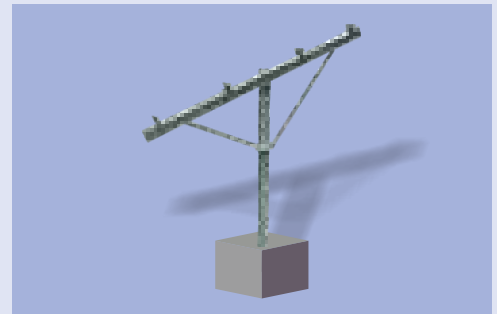
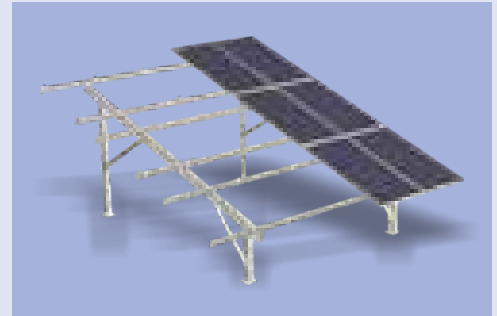
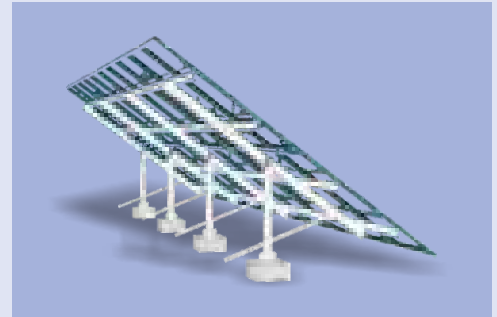
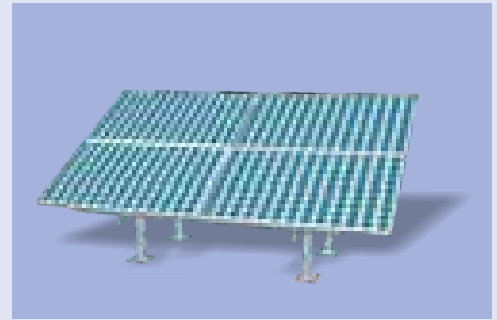
- Designed for servicing to large-scale solar MW projects
- Suitable where soil is having high cohesion properties
- No piling or concrete base required
- Savings via fastest possible assembly using minimum manpower
- Structure is composed of HRCA duly hot dip galvanized as per relevant IS standards

ROOF MOUNTED SOLAR STRUCTURES

Roof mounted solar power systems consist of solar panels held in place by racks or frames attached to roof based mounting support

ROOF MOUNTING STRUCTURE SUPPORTS

- Pole mounts - attached directly to the roof structure and may use additional rails to hold the panel racking or frames
- Ballasted footing mounts - concrete or steel bases that use weight to secure the panel system in position
- Facilitates easy decommissioning or relocation of solar system
- No adverse effect on the roof structure as penetration is not required



MANUFACTURING EXCELLENCE

Jaskon has a state-of-the-art manufacturing facility for solar products and components manufacturing. The facility is equipped with highest levels of technology while being ISO 9001, ISO 14001 and OHSAS 18001 certified. The unit is complete with facilities for designing, assembly, testing and packaging of the products. Advanced machinery, state-of-the-art automated paint shop and expert workforce combine to give the best quality products along with reliability, timely delivery and pan India coverage.

- Manufacturing area of over 150,000 sq. ft.
- Installed capacity of 8000 metric tonnes per annum



ADVANCED MACHINERY

- Roll forming machines
- Overhead cranes up to 10 tonnes
- Punching machines
- Numbering machines
- Notching machines
- CNC machines



ABOUT JAKSON GROUP

Jakson is a leading energy and engineering solutions company offering a range of products and services that help our customers effectively meet their diverse needs in a safe and sustainable manner. The company is driven by its core values of building enduring relationships and its vision to be a trendsetter in energy solutions. Jakson core businesses include Powergen & Distribution, Solar, EPC and Defence. It also has investments in Hospitality and Education sector. Established in the year 1947, Jakson has an extensive presence in India with 2000 employees, 3 manufacturing facilities, 1 Global Training Centre, 22 Sales Offices, 2 Service centers and a wide network of channel partners and dealers. The company has business operations in India, Bangladesh, Nepal, Singapore and Dubai. Jakson headquarters are located in Noida, India.

JAKSON GROUP

A-43, Phase-II Extn., Hosiery Complex, Noida-201305, U.P., India | Tel.: +91-120-4302600, 4526100
Toll Free No. : 1800 103 2600 | info@jakson.com | www.jakson.com

Product specifications are subject to change without notice
©2018 JAKSON ENGINEERS LTD. All rights reserved